

# Inspiring Curiosity

BRINGING **SCIENCE TO LIFE** AND **LIVES TO SCIENCE**



COMMUNITY IMPACT REPORT 2019



DA VINCI  
**SCIENCE**  
CENTER®

# Thank You

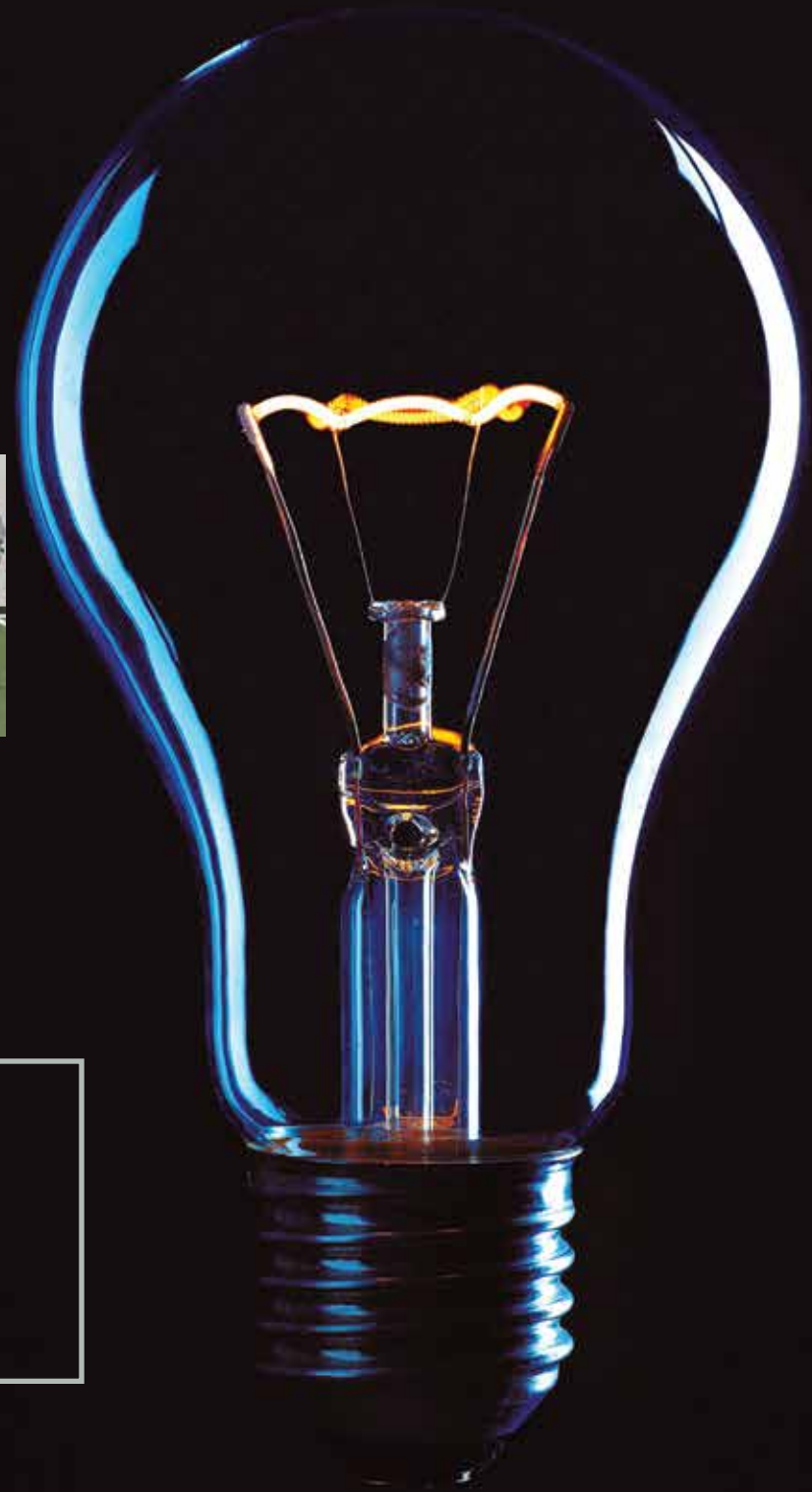


WITH YOUR SUPPORT, THE **DA VINCI SCIENCE CENTER**  
ENGAGED STUDENTS IN **HANDS-ON LEARNING** THAT SPARKED  
**CURIOSITY** AND CHANGED THE TRAJECTORY OF THEIR LIVES.



**"LEONARDO DA VINCI WAS A GENIUS. WHAT  
SET HIM APART WAS HIS CREATIVITY AND  
HIS INTENSE CURIOSITY"**

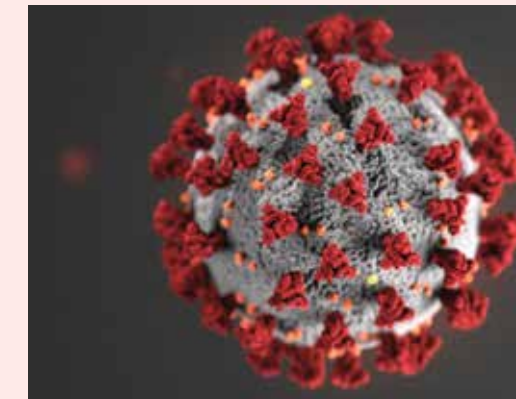
— WALTER ISAACSON, IN LEONARDO DA VINCI



Students explore anatomy using Cyndi the Syndaver sponsored by Highmark.



**DA VINCI  
SCIENCE  
CENTER**  
BRINGING SCIENCE  
TO LIFE AND LIVES  
TO SCIENCE



The mission of the Da Vinci Science Center is to “bring science to life and lives to science”. In a world with enormous challenges from global pandemics to climate change, the Da Vinci Science Center’s work is more important than ever. Science and a scientifically literate society are humanity’s best hopes for a prosperous future. The Da Vinci Science Center provides hands-on science learning to prepare students to become the problem solvers of tomorrow.





Today, the Da Vinci Science Center is the “go-to” destination in the greater Lehigh Valley for hands-on experiences that engage and inspire youth and families. In 2019, participation was at an all-time high, reaching 154,000 people. Over the past 5 years, the Science Center served 721,000 people, with an average annual growth rate of 5%.

2019: A Capstone Year with Record-Breaking Achievement

■ In-Building Participation .....	118,633
Visitors .....	105,810
Reserved Programs* .....	12,823
■ Outreach Programs .....	35,042
■ Teacher Training Days .....	600
<b>TOTAL:</b>	<b>154, 275</b>

# Dramatic Growth

2015-2019

2015-2019

**526,000**  
Visitors to the  
Science Center

**196,000**  
Participants  
in Outreach  
Programs

**\$9.4M**  
in  
Contributions

**\$229,000**  
in Operating Net  
Income

## LETTER FROM THE BOARD CHAIR AND CEO



Dear Friends:

We are writing this from our homes following weeks of mandatory Stay-At-Home measures by Governor Wolf. The Da Vinci Science Center is closed, and we have furloughed many of our staff. Schools are closed, and students are at home missing valuable classroom time to develop and hone new skills. To spark students’ curiosity and keep them engaged in hands-on learning, the Science Center offers Science at Home activities on its website. When the pandemic subsides, the Science Center will be prepared to resume delivery of quality science, technology, engineering, art, and mathematics (STEAM) programs at its Allentown facility and in the community, while ensuring that all participants feel safe. These are challenging times for all of us, but we know that through our collective efforts we will combat the spread of the coronavirus and improve the health of our community.

In this report, we celebrate the accomplishments of the past year, made possible with your generous support. 2019 was another record-breaking year with participation in Science Center experiences exceeding past levels, fueled by continued investment in new programs and school and community partnerships. We served over 154,000 people at our Allentown facility and at schools and community sites throughout the region. On the pages that follow, we share examples of how your support was invested in new exhibits and programs that sparked curiosity and a love of learning, and improved student knowledge, skills, and attitudes about science.

For the Science Center, the outlook for the year ahead is challenging. Once we re-open, we expect revenues to be significantly less than the past as families will be hesitant to visit venues like ours, and schools may not schedule STEM summer programs or school field trips. We are developing distance learning programs to continue providing Da Vinci experiences in homes and schools. We know that the work we do is more important than ever. A strong STEM workforce and a scientifically literate society are humanity’s best hopes for addressing the coronavirus pandemic and other major global challenges.

On behalf of the Board, staff, and our volunteers, we thank you for your tremendous support. If you are able, we ask you to consider a gift to help the Da Vinci Science Center emerge from the current pandemic crisis more prepared than ever to educate the next generation of scientists, engineers, and creative thinkers who will shape our collective futures.

With heartfelt thanks,

*Vincent Sorgi*  
Vincent Sorgi  
Chairman of the Board

*Lin Erickson*  
Lin Erickson  
Executive Director and CEO





# Inspiring Curiosity

THE DA VINCI SCIENCE CENTER TAKES ITS NAME FROM PERHAPS THE MOST CURIOUS PERSON THAT EVER LIVED. THE CENTER'S AIM IS TO FOSTER LEONARDO'S WAY OF THINKING AND INSPIRE FUTURE INNOVATORS, CREATIVE THINKERS, AND ENTREPRENEURS.

THIS IS CRITICALLY IMPORTANT BECAUSE THERE IS AN URGENT NEED TO PREPARE THE NEXT GENERATION OF SCIENTISTS AND CREATIVE THINKERS WHO WILL SOLVE THE WORLD'S MOST PRESSING CHALLENGES.

## Educational Programs

AT THE SCIENCE CENTER



◀ Reva Gandhi signs the provisional patent she earned following participation in the **Inventors Lab Program**. In this program, students explore the invention process through hands-on activities led by scientists and engineers.

The Science Center's **Medical School Programs (sponsored by St. Luke's)** give students the opportunity to learn from medical professionals and participate in health science activities that focus on clinical and procedural skills.



◀ **FIRST® LEGO® League** introduces students to coding, programming, and engineering in a creative environment where students work collaboratively to solve a yearly robotics challenge.





## Interactive Experiences AT THE SCIENCE CENTER



◀ Kids stretch their creativity and work together to create large Keva block towers!

▲ Students in the **Structure and Sculpture Summer Camp** combine mastery of physics concepts with geometric principles to create a tower from tightly-wound paper tubes.

### Leo's Creativity Studio ▶

gives kids the opportunity to build and create, using real tools as well as their imagination. The Studio features different activities and experiences throughout the year.



RIGHT: Bubblemania photo by Casey Carle

OUR GLOBAL ECONOMY IS BECOMING MORE AND MORE RELIANT UPON THE STEM FIELDS, BUT WE NEED MORE THAN SCIENTISTS AND CODERS IN LAB COATS. AT THE DA VINCI SCIENCE CENTER, WE CARRY OUT OUR MISSION EVERY DAY USING THE TRADITIONAL STEM DISCIPLINES—SCIENCE, TECHNOLOGY, ENGINEERING, AND MATH—AND ARE INCREASINGLY INTEGRATING THE ARTS INTO OUR TOOLBOX IN ORDER TO ENCOURAGE YOUNG PEOPLE TO FULLY EXPLORE THEIR INNER CURIOSITY AND REALIZE THEIR POTENTIAL FOR INNOVATION AND CREATIVITY.

# LEADING THE WAY IN STEAM. Learning

**STEAM** = Science, Technology,  
Engineering, Art, and Math



# STEAM TEAM High Impact Programs



THE STEAM TEAM BRINGS HANDS-ON SCIENCE LEARNING TO SCHOOL AND COMMUNITY SITES. THROUGH HIGH IMPACT PROGRAMS DELIVERED OVER MULTIPLE SESSIONS, DA VINCI EDUCATORS DEEPLY ENGAGE AND SUSTAIN STUDENT INTEREST IN STEAM AND CREATE PATHWAYS TO COLLEGE AND CAREER READINESS. PROFESSIONAL DEVELOPMENT PROGRAMS ARE DESIGNED TO HELP TEACHERS ADOPT BEST PRACTICES TO IMPROVE STUDENT OUTCOMES.

## Outreach and Professional Development Programs



▲ **STEM Summer Learning:** Students learn about insects and try to catch them with the help of Da Vinci educators.

U.S. Dept. of  
Ed. Professional  
Development  
Program: Arts  
educators get  
creative with  
electronic circuits.



▲ **Rube Goldberg Design Competition:** Allentown School District students work as a team to create Rube Goldberg machines.







# Our Impact

VISITING SCIENCE CENTERS MATTERS. RESEARCH CONSISTENTLY SHOWS THAT SCIENCE CENTERS ARE MORE EFFECTIVE THAN READING, WATCHING TELEVISION, AND EVEN CLASSROOM INSTRUCTION IN DEVELOPING INTEREST IN AND POSITIVE ATTITUDES TOWARDS STEM FOR INDIVIDUALS THROUGHOUT THEIR LIVES. THE HANDS-ON APPROACH EMPHASIZED BY SCIENCE CENTERS HELPS PROMOTE SUSTAINED INTEREST IN SCIENCE, WHICH IS LINKED TO ACHIEVEMENT AND THE INTENTION TO PURSUE STUDIES AND CAREERS IN STEM<sup>1</sup>.

Since World War II, advances in science and technology have driven 85% of U.S. economic growth. Contributions for innovation in science and technology have resulted in dramatic improvements to American lives. Today, U.S. dominance in S&T is declining, and competitiveness on the world stage is at risk<sup>2</sup>. In the U.S., we feel this risk during the current coronavirus pandemic. The need to invest in the future generations of STEM workers has never been more important.

To help address this challenge, Science Centers are critical components of the educational infrastructure of our communities. Like many of its peers, the Da Vinci Science Center is a regional hub for STEAM learning which:

- inspires curiosity and sparks lifelong interest in learning;
- helps build a pipeline of creative talent to fuel our economy;
- shifts lives to new career paths, college degrees, and family-sustaining jobs;
- helps teachers implement new practices that reinforce STEAM learning and expand opportunities for their students to build interest and skills; and
- brings multiple generations of families together and creates memories.

<sup>1</sup> "The contribution of science rich resources to public science interest" John H. Falk et al. Journal of Research in Science & Teaching, October 2017  
<sup>2</sup> 2020 report on the "State of US Science & Engineering" presented by the NSF to Congress

## YOUNG INVENTOR

HAYDEN SCHMIDT

Hayden participated in the 2016-17 Inventors Lab Program at Da Vinci Science Center. Knowing that inventions help solve problems, he drew on his personal experience working with his father around the house and looked for a solution to the problem of identifying electrical circuit breakers and the circuits they control. He worked with attorneys from the Law Office of James R. McDaniel to file a patent with the United States Patent and Trademark Office. In February 2019, his patent was approved. Since then, he has received two additional patents for further refinements and software to support his invention. His third patent is shared with his brother, Arthur T. Schmidt, III, and father, Arthur Schmidt, Jr.

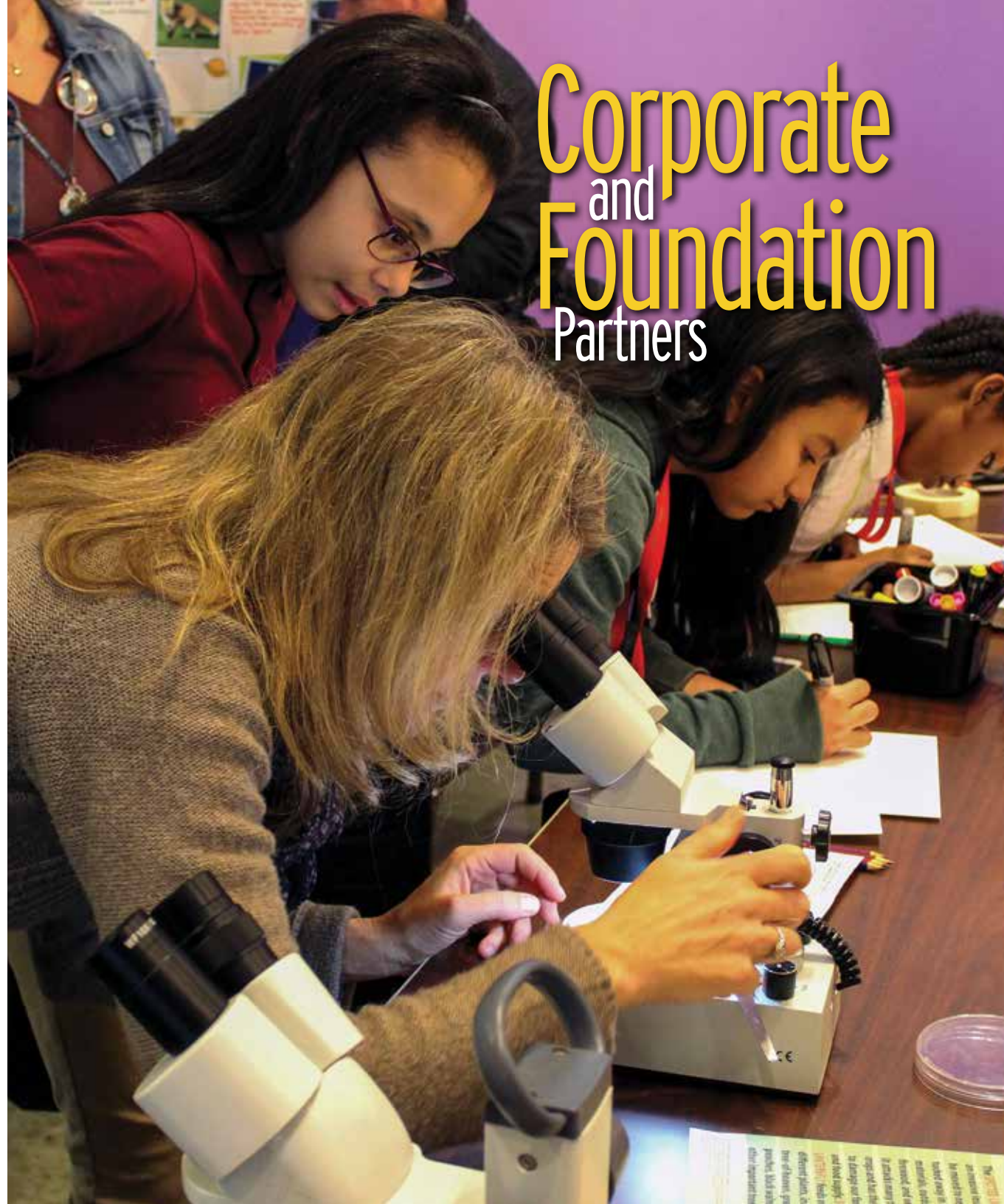




## SANOFI PASTEUR WISE Initiative

Sanofi Pasteur, located in Swiftwater, PA, is the vaccines global business unit of Sanofi US, partnering with the public health, medical, and scientific communities to improve access to life-protecting vaccines and increase vaccination coverage.

In 2019, Sanofi Pasteur served as the Presenting Sponsor for the Da Vinci Science Center's Annual WISE Forum and was also a major supporter of our Career Connection Days field trip program. Sanofi employees volunteered at both events as mentors and introduced middle school and high school students to STEM career opportunities.



## Corporate and Foundation Partners

## MACK TRUCKS Mack Manufacturing School

Mack Trucks has supported the Da Vinci Science Center in many ways throughout the years, including the “Built Like a Mack Truck” exhibit that opened in 2013 and sponsorship of Career Connection Days. One of the newest initiatives out of this partnership is the Mack Manufacturing School.

Youth enrolled in the Mack Manufacturing School spend up to 16 hours exploring different aspects of the manufacturing process with a professional Da Vinci educator and a passionate team of mechanics, machinists, and engineers from Mack Trucks.



## STABLER FOUNDATION Career Days & STEM Summer Learning

The Donald B. and Dorothy L. Stabler Foundation, located in Harrisburg, PA, was established by Mr. and Mrs. Stabler in 1966 exclusively for charitable, religious, scientific, literary, or educational purposes. In 2019, the Stabler Foundation provided support for Career Connection Days and the STEM Summer Learning Program.

Career Connection Days provide the opportunity for students to speak with STEM professionals, participate in a variety of STEM-related activities, and explore careers. The STEM Summer Learning Program helps reduce summer learning loss in underserved schools. Using a co-teaching model, Da Vinci educators and certified classroom teachers engage students in hands-on science investigations, integrated with math and reading instruction, to maintain or make gains in academic performance over the summer months.





VOLUNTEERS ARE VERY IMPORTANT TO THE CENTER, DEDICATING THEIR TIME AND EFFORT TO BRINGING SCIENCE TO LIFE.

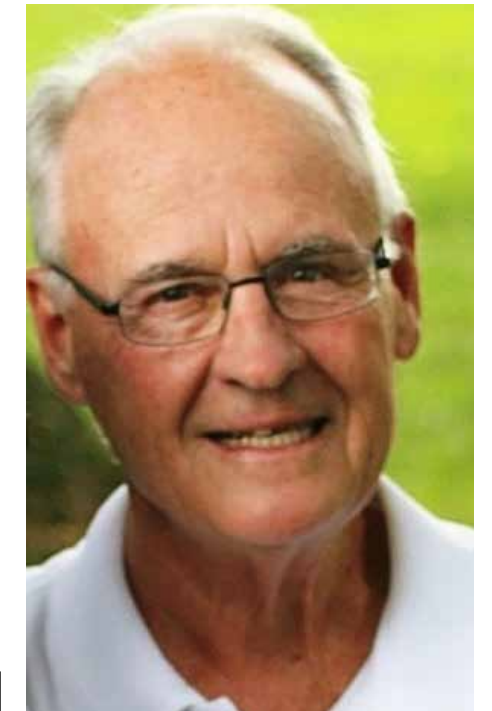
# Volunteers

## Making a Difference



Air Products retirees, spouses, and friends volunteer to assist and support community nonprofit organizations in the Lehigh Valley. AirPRO members have been helping the Science Center since 1999 serving as volunteers, mentors, and helping to build exhibits. Many of them were also our first supporters. When the Science Center moved into its Cedar Crest facility, AirPRO members were our first group of exhibit floor volunteers. They also helped get many mailings out in a timely manner.

As the Center grew, AirPRO expanded its participation by installing traveling exhibits, serving as speakers and tour guides, and providing technical expertise to assist with exhibit repair. AirPRO Scientists were also invited to give talks on specialty gases, hydrogen cars, and electronic gases, and demonstrate the making of liquid nitrogen ice cream. The Da Vinci Science Center truly appreciates the time that AirPRO members spend volunteering and the passion that they bring to their work.



### In Memoriam JOHN JOHNSTON

John Johnston was a member of AirPro and active volunteer at the Da Vinci Science Center since its early years. Mr. Johnston passed away in December 2019 and will be deeply missed by his family, friends, and Da Vinci staff and volunteers. The following people made contributions in his memory:

Judy Belaires  
Jennifer Cole  
Alexander Dyer  
Mark & Lin Erickson  
M. Joanne Feigl  
Frances Marie Feigl &  
Joseph J. Markano Jr.

Gerald & Elaine Haas  
Delphine A. Marquette & Kelly M. Bond  
John & Deborah Metz  
Jeffrey & Deborah Swan  
Craig & Christine Thatcher





# THE WISE Initiative

IN 2015, THE DA VINCI SCIENCE CENTER ESTABLISHED THE WISE INITIATIVE AS PART OF ITS BROADER COMMITMENT TO SUPPORTING ASPIRING YOUNG GIRLS AND PRACTICING FEMALE STEM PROFESSIONALS. THE SCIENCE CENTER OFFERS A NUMBER OF PROGRAMS AND EVENTS THROUGHOUT THE YEAR TO INTRODUCE FEMALE STUDENTS TO STEM CAREER PATHWAYS AND TO PROVIDE OPPORTUNITIES FOR FEMALE STEM PROFESSIONALS TO NETWORK AND SUPPORT EACH OTHER.

## WISE INITIATIVE PROGRAMS & EVENTS

Annual WISE Forum & Dinner  
Women in STEM Career Connection Days  
STEM Girls! After School Club  
Girl Scout Day and Camp-In Programs  
WISE Network Events for STEM Professionals  
Women in STEM Research Study

## 2019 WISE FORUM

April 1, 2019  
University Center at DeSales University  
Center Valley, PA

The Women in Science and Engineering (WISE) Forum, presented by Sanofi Pasteur, included a Mentoring Dinner, followed by a Panel Discussion open to the public featuring distinguished female leaders in STEM. The Mentoring Dinner was attended by more than 350 women in STEM,

including students from 65 different high schools in 20 counties in PA and NJ, college students and faculty from all Lehigh Valley area colleges, and STEM professionals from nearly 30 companies and organizations. Following the dinner, a panel of four female distinguished STEM leaders shared their challenges, accomplishments, and encouragement with a crowd of over 400.

## 2018-2019 WISE SPONSORS

Presenting Sponsor: Sanofi Pasteur  
Partner Sponsor: B. Braun Medical  
Mentor Sponsors: ATAS International, Dexter & Dorothy Baker Foundation, Lutron Electronics Company,  
Manufacturers Resource Center and the Dream Team  
Network Sponsors: Air Products, Lafayette College, and CF Martin & Co  
Table Sponsors: Bosch Rexroth, Carpenter Technologies,



Cedar Crest College, Computer Aid, Evonik, Girl Scouts of Eastern PA, HT Lyons, Intertek, Just Born Quality Confections, Langan Engineering, Lehigh Valley Health Network, PPL Corporation, QuVa Pharma, Thermo Fischer Scientific, UGI, and Victaulic

## 2019 WISE FORUM DISTINGUISHED PANELISTS

- Eileen Cipriani, Deputy Secretary for Workforce Development, PA Department of Labor and Industry
- Tamala Mallett Moore, Sr. Director Global Pharmacovigilance, Sanofi Pasteur
- Michelle McGrath, Director of Global Engineering and Manufacturing, Air Products
- Jean Keeler, President & CEO, Grand View Health (Moderator)

## WISE EXECUTIVE ADVISORY COUNCIL

The WISE Initiative is overseen by an Executive Advisory Council

**CO-CHAIRS**

- Erin Armstrong, Associate Director, Sterilization, B. Braun Medical

- Katy Worrilow, Ph.D., Founder and CEO, LifeAire Systems

## MEMBERS

- Mary Armstrong, Ph.D., Professor Women's and Gender Studies and English, Lafayette College
- Terry Capuano, Chief Operating Officer, Lehigh Valley Health Network
- Lin Erickson, Executive Director and CEO, Da Vinci Science Center
- Bonnie Hall, VP of Global Quality and Continuous Improvement, Crayola
- Rachel Hayden, VP and Chief Information Officer, Just Born, Inc.
- Stephanie Hnatiw, Community Leader, YWCA of Bethlehem
- Kristen Jellison, Ph.D., Associate Professor of Civil and Environmental Engineering, Lehigh University
- Joy Karnas, Ph.D., Chair, Director of Biological Sciences, Professor of Biology, Director of Genetic Engineering Program, Cedar Crest College
- Maureen Maier, Vice President of Girl Experience & Property, Girl Scouts of Eastern Pennsylvania



- Tamala Mallett Moore, Senior Director, Global Pharmacovigilance
- Megan McGovern, Business Team Leader, Mack Trucks
- Darlene Pors, Senior HVAC & Plumbing CAD Designer, HT Lyons
- Kelly Rindock, Vice President - Wealth Management, Steel Valley Investment Group of Raymond James & Associates, Inc.
- Susan Schierwagen, VP of Couplings, Fittings and Fire Suppression, Victaulic
- Jean Vincent, VP Product Line Advanced Polyurethanes, Evonik Corporation



# DA VINCI SCIENCE CENTER *Gala*

## HALL OF FAME

### 2019 Hall of Fame Awards Gala

APRIL 27, 2019  
ARTSQUEST CENTER AT STEELSTACKS  
BETHLEHEM, PA

### 2019 Hall of Fame Award Winners

**SPIRIT OF VERROCCHIO MENTORSHIP AWARD:** Manufacturers Resource Center & Jack Pfunder

**GRAND MAESTRO CORPORATE AWARD:** B. Braun Medical

**DISTINGUISHED FEMALE STEM LEADERSHIP AWARD:** Girl Scouts of Eastern Pennsylvania

**EDUCATOR EXCELLENCE AWARD:** Anna Leigh Conway, Science Teacher, Carbon Career & Technical Institute

**EDUCATOR EXCELLENCE STEM LEADERSHIP AWARD:** Marisa Barilka, STEM Coordinator, Valley View School District

**NEW EDUCATOR EXCELLENCE AWARD:** Graceanne Ruggiero, Biology Teacher, Freedom High School

**STUDENT EXCELLENCE AWARDS:** Matthew Liu, Senior, Parkland High School; Rhea Malhotra, Junior, Moravian Academy; Sriyaa Suresh, Senior, Parkland High School; Vidhya Thiyagarajan, Senior, Lehigh Valley Academy Regional Charter School

**EREL STEM SCHOLARSHIP AWARD:** Madison Yeager, Senior, Schuylkill Haven Area High School

**YOUNG INVENTOR AWARD:** Hayden Schmidt, Freshman, Emmaus High School

**LEONARDO'S LEGACY AWARD:** Charles C. Dent (posthumous), represented by Peter Dent

### 2019 Hall of Fame Awards Gala Sponsors

**SPIRIT OF VERROCCHIO MENTORSHIP AWARD SPONSOR:** Victaulic

**GRAND MAESTRO CORPORATE AWARD SPONSOR:** Alvin H. Butz

**DISTINGUISHED FEMALE STEM LEADERSHIP AWARD SPONSOR:** Highmark Blue Shield



**EDUCATOR EXCELLENCE AWARDS SPONSORS:** ATAS International, BB & T, and Just Born Quality Confections

**STUDENT EXCELLENCE AWARDS SPONSORS:** Air Products, B. Braun Medical, Frank and Yvonne Schweighardt, and PPL Corporation

**EREL STEM SCHOLARSHIP AWARD:** ET&T and Fusun Bubernack

**YOUNG INVENTOR AWARD SPONSOR:** Lutron

**LEONARDO'S LEGACY AWARD SPONSOR:** Art and Denise Katsaros

**INVENTOR LEVEL SPONSORS:** Baker Hostetler, EMS Consulting, Bob and Sandy Lovett, Vincent and Michelle Sorgi, and Wodjak Governmental Relations

**INNOVATION LEVEL SPONSORS:** Buckno Lisicky & Company, Bracalente Manufacturing Group, Cedar Crest College, City Center Lehigh Valley, Charles and Pam Dent, Bob and Jacki Dixon, Mark and Lin Erickson, Gene and Jane Ervin, Gross McGinley, LLP, HT Lyons, Lehigh Carbon Community College, Lehigh Valley Health Network, Northampton Community College, PFM Financial Advisors, Plymouth Soundings, RMG Insurance, Ryan D. Oestreich of Mass Mutual Eastern PA, Spillman Farmer Architects, and Thermo Fisher Scientific

**AUDIOVISUAL SPONSOR:** AmericaVen

**PRINTING SPONSOR:** EBC Printing

**VITRUVIAN AWARD SPONSORS:** Beall Fowler and Fowler & Peña Creations

Nearly 350 guests attended the 2019 Hall of Fame Awards Gala. The Gala, organized by a Volunteer Committee, celebrated the accomplishments of students, educators, and community leaders recognized for advancing STEAM education and raised funds to support Da Vinci Science Center operations and the Linny Fowler Science Inquiry Fund, which provides scholarships for undeserved youth.



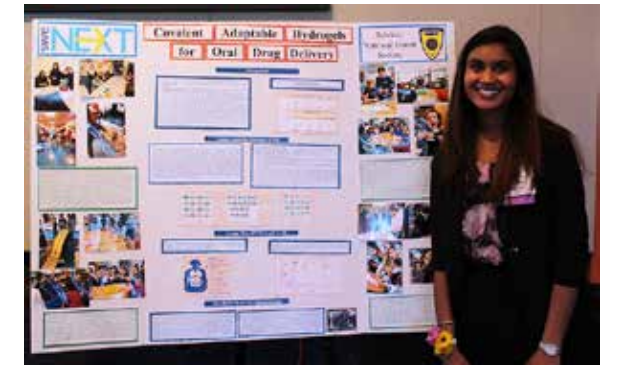
### 2019 Hall of Fame Awards Gala Committee

Cathy Lynch (chair), Joan Amaya, Marcella Breininger, Dorothy Coughlin, Nancy Eckert, Mary Ellston, Arjana Etchason, Mary Gedney, Ruth Keblish, Jenny Kemps, Louse Loehwing, Kathleen McKenzie, Larry Miley, Edie Ritter, and Michelle Sorgi

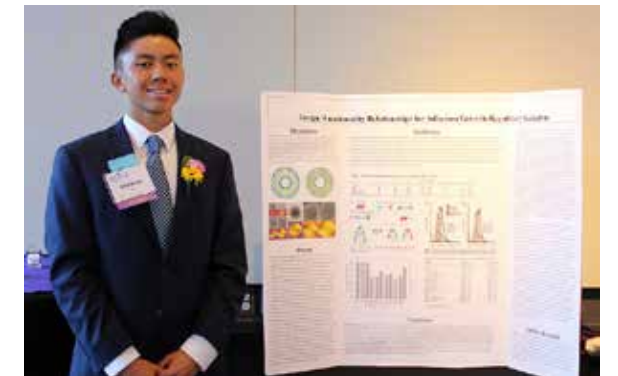
**DSC EVENT MANAGEMENT TEAM:** Judy Belaires, Sharon Alexander, Matthew Easterwood, and Elysia Trapp



▲ **EREL STEM SCHOLARSHIP WINNER**  
Maddy Yeager



▲ **STUDENT EXCELLENCE AWARD WINNER**  
Vidhya Thiyagarajan



▲ **STUDENT EXCELLENCE AWARD WINNER**  
Matthew Liu



# Honor Roll of Giving

## \$100,000+

U.S. Department of Education/Carbon  
Lehigh Intermediate Unit  
County of Northampton  
W. Beall Fowler  
Bob and Sandy Lovett  
Pennsylvania Department of  
Education  
Ryan Family Foundation  
Vince and Michelle Sorgi

## \$50,000+

Air Products  
ATAS International, Inc.  
Donley Foundation  
Institute of Museum and Library  
Services  
Schlyer Kemps Foundation  
The Harry C. Trexler Trust

## \$25,000+

B. Braun Medical  
County of Lehigh  
The Century Fund  
Julius and Katheryn Hommer  
Foundation  
Maureen Michael and Mark Gottwald  
PA Department of Education/

Allentown School District  
Pennsylvania Historical Museum  
Commission  
PPL  
Reach Cyber Charter School  
Sanofi Pasteur

## \$10,000+

Dexter F. and Dorothy S. Baker  
Foundation  
BB&T  
Steve and Marcella Breininger  
City Center Investment Corporation  
Mark and Lin Erickson  
John Paul and Denise Jones  
Lehigh Valley Community Foundation  
Lutron Foundation  
James and Jayne Miller  
National Science Foundation/Lehigh  
University  
Donald B. and Dorothy L. Stabler  
Foundation  
Thermo Fischer Scientific  
UGI Utilities, Inc.  
U.S. Department of Commerce/  
Economic Development  
Administration

# Our Supporters

THE HONOR ROLL OF GIVING RECOGNIZES ALL DONORS WHOSE FINANCIAL COMMITMENTS HAVE SUPPORTED  
THE DA VINCI SCIENCE CENTER DURING THE MOST RECENTLY COMPLETED FISCAL YEAR.

## \$5,000+

Greg Butz  
Capital Blue Cross  
Bob and Jacki Dixon  
Embassy Banks for the Lehigh Valley  
Norman and Rosalie Fain Family  
Foundation

Katsaros Family Foundation  
Mack Trucks  
James and Irene Mclean  
Raymond James & Associates  
Frank and Yvonne Schweighardt  
The Rider-Pool Foundation  
Victaulic  
Wells Fargo Foundation

## \$1,000+

Agora Cyber Charter School  
Victor and Jacqueline Agostinho  
Greg and Tamara Altonen  
Amaranth Foundation/Joan Moran  
George and Judy Arangio  
Baker & Hostetler LLP  
Hank and Joanne Barnette  
Walter and Anna Bastian Foundation  
Gus and Judy Belaires  
Rob and Kristen Bennett  
Rex and Terri Boland

Borden Perlman Insurance  
Bosch/Rexroth Corporation  
James and Melissa Brooks  
James and Cynthia Bus  
Alvin H. Butz, Inc  
Greg Butz  
Lee and Dolly Butz  
Michael Butz  
Carpenter Technology Corporation  
Cedar Crest College  
Charlie Dent for Congress  
Computer Aid  
Crayola  
David and Pam DeCampi  
Alfred and Jill Douglass  
Ted and Amy Singer Douglass  
Anna Duemier  
Mohamed and Nora El Aasser  
Margaret McIntyre Enloe  
Eugene and Jane Ervin  
ET&T  
Evonik Corporation  
FL Smidth  
Steve and Jeanne Follett  
Yan Gao and Peihua Sheng  
Michael Gausing  
Mary Gedney  
Sara George

Girl Scouts of Eastern PA  
The Hartford  
Marcus and Rachel Hayden  
Bill and Mary Ann Heydt  
Highmark Blue Shield  
Insulation Corporation of America  
Intertek Chemicals and Materials  
John T. Yurconic Agency  
Just Born Quality Confections  
Joe and Judy Kaminski  
Fred and Christine Kimock  
Lafayette College  
Langan Engineering  
Lamont and Loretta Lashley  
Lehigh Carbon Community College  
Lehigh Valley Health Network  
William and Patti Lehr  
Tom and Cathy Lynch  
Ted and Suzanne Lyons  
The Martin Guitar Charitable  
Foundation  
Elizabeth Meade and Arturo Perez  
Edwin and Anne Miller  
Joseph Moore  
PBS WLVY-TV Channel 39  
Octavio Pena  
James and Irene Pennington  
Pennsylvania Cyber Charter School

Guido and Terri Pez  
Plymouth Soundings, LLC  
David and Jamie Quier  
Quva Pharma, Inc  
Sally Ragosta  
Edith Ritter  
Joel and Beth Rosenfeld  
Salim Salet  
Mike and Diane Salute  
Bill and Susan Schierwagen  
Tom and Pat Seidenberger  
Serfass Construction Company  
Anthony Sorgi  
Spillman Farmer Architects  
Sylvia Perkins Charitable Trust  
Richard and Amy Thompson  
Charles Versaggi  
Harold\* and Marcia Wagner  
Weidenhammer  
Weis Markets  
WFMZ-TV-D  
George and Karen White  
Wojdak & Associates, LP  
Andrew Woytek  
Robert and Marilyn Zamboldi  
Carl and Debra Zvanut

\*Deceased

# Honor Roll of Giving

## \$500+

AETNA Foundation  
Cindy Allan  
The American Chemical Society  
Brad and Anne Baum  
Becker & Frondorf, Inc.  
Chris and Emily Betley  
Bracalente Manufacturing Group  
Robert and Regina Bryson  
Buckno, Lisicky and Co.  
Neal Clevenger  
Peter and Kathleen Dent  
Andrew and Laura Elmore  
Lona Farr and David Voellinger  
Bob and Susan Gadowski  
Michlyn Gould  
Jack Gross and Sandy Stahl  
Gross McGinley, LLP  
Robert F. Hunsicker Foundation  
Johnson & Johnson  
Ruth Keblish  
Meagan Kuchan  
Manufacturers Resource Center  
Massachusetts Mutual Life Insurance  
Co.  
John McGuinness  
Terri Melcher  
Frank Michael  
Moravian Academy  
NJM Insurance Group  
Northampton Community College  
PFM Financial Advisors LLC

Doris Richards-Juhasz  
Kelly Rindock  
RMG Insurance  
Alexander and Ruth Torok

## \$100+

Sharon Alexander  
Amazon Smile  
Antonio and Karen Angello  
Erin Armstrong  
Debra Jo Ashton-Chase  
Steve and Jane Auvil  
Maria Baptiste  
Stephen Barilka  
Jason Barnett  
Ann Bebout  
Hans and Melissa Bell  
Renee Bennett  
Nasreen Bhatt  
Matthew and Ann Bieber  
Brenda Binns  
Stefanie Bohunicky  
Joe Bondi  
Dave Borish  
Lisa Boscola  
Doug and Peggy Brown  
Fusun Bubernack  
Marisa Burns  
Forrest and Nina Cavalier  
Michael Caverly  
Joyce Cerniglia  
Coca-Cola Bottling Company

Michael and Theresa Cosgrove  
Walter Dex  
Yi Du  
Matthew Easterwood  
Mary Ellston  
Elizabeth Enloe  
David Erickson  
Arjana Etchason  
Mark and Lauren Fine  
First Presbyterian Church of  
Bethlehem  
Simona Flaiban  
Melissa Flynn  
Kim Fraitess-Dow  
Stephen and Peg French  
Luis and Rebecca Galarza  
Benjamin Gamoke  
John Ganter  
Geico  
Gayle Getz  
Jason Ginther  
Denise Greene  
Tyler Groft  
Barbie Haberer  
Donald and Virginia Haberman  
Dan Harrigan  
Blake and Hillary Harrison  
Clyde and Valarie Hornberger  
Paul Hurd  
Pat Johnson  
John and Jenny Kemps  
Erick and Lisa Kermitz  
Ellen Kern  
Brad Kreschollek  
Howard Kuritzky  
Debra Lamb

David and Ann Lewis  
Matthew Liu  
Daniel Loikits  
Allison Longenhagen  
Amanda Martin  
Kelly Martin  
Jonn McCollum  
James McDaniel  
Ed McKarski  
Michael McKarski  
Kathy McKenzie  
Ray Melcher  
Merck Foundation  
Larry Miley  
Eli Mimari  
Moravian College  
Kate Mueller  
Tekla Onorata  
Bruce and Judith Palmer  
James and Carol Redenbaugh  
Elena Reifenstein  
Thomas and Lauren Parker  
Mark and Stacy Phander  
Jean Pfunder  
Robert and Patricia Pietrobon  
Robin Plattner  
Jen Pors  
Michelle Quier  
Nicole Quick  
Judith Rance-Roney  
Joseph Reither  
Paul Ricciardi  
Thomas Roney  
Graceanne Ruggiero  
Linda Ruggiero  
Victor Salicetti

Sureshkumaar Santanam  
Art Schmidt  
Trevor Siegfried  
Marzenna Sokolska  
David and Ann Tachovsky  
United Way - Aetna Employees  
United Way - Anonymous  
United Way - Da Vinci Science Ctr  
(Anon)  
Lindsey Welch  
Ilene Wood  
A. Judd Woytek  
Brian and Bridgitte Yeager  
Jie Yao  
Megan Zagwoski

## <\$100

Anonymous  
Joan Amaya  
Daniel Barata  
Jacqueline Baum  
Sean Beck  
Lissette Caro-Rosado  
Nancy Eckert  
Roberta George  
Barbara Gluck-Gargon  
Eric Gross  
Patricia Ann Hachey-Siegfried  
Kate Heflin  
Courey and Kristi Hertzog  
Erin Kerchner  
Harry and Deb Kulp  
Robert Lein  
Michael Litzenberger  
Sharon Miller  
Thomas and Patricia Panfile

Aiven Relles  
Megan Ruhmel  
Jesse C. Saborsky  
Maria Sanchez  
Annette Shaw  
Abby Silfies  
Kathleen Steele  
Elysia Trapp  
Target Corporation  
Walter Villard  
Raymon Williams

## Staff Honor Roll

Sharon Alexander  
Joan Amaya  
Ann Bebout  
Judy Belaires  
Stefanie Bohunicky  
Joe Bondi  
Matthew Easterwood  
Mary Ellston  
Lin Erickson  
Peg French  
Tyler Groft  
Kate Heflin  
Michael Litzenberger  
Amanda Martin  
Kelly Martin  
Jonn McCollum  
Maureen Michael  
Patricia Pietrobon  
Jennifer Pors  
Elysia Trapp

\*Deceased

+Does not include in-kind gifts



# Leonardo Society

THE LEONARDO SOCIETY IS A GIVING SOCIETY FOR INDIVIDUALS WHO MAKE AN UNRESTRICTED GIFT OF \$1000 OR MORE IN A YEAR TO SUPPORT DA VINCI SCIENCE CENTER OPERATIONS.

Victor and Jackie Agostinho	Mark and Lin Erickson	Arturo Perez and Elizabeth Meade
Greg and Tamara Altonen	Gene and Jane Ervin	James and Irene Pennington
George and Judith Arangio	Scott and Cathy Fainor	Guido and Terri Pez
Gladys Barclay	Steve and Jeanne Follett	David and Jamie Quier
Hank and Joanne Barnette	Beall Fowler	Sally Ragosta
Gus and Judy Belaires	Mary Gedney	Edie Ritter
Rob and Kristen Bennett	Yan and Peihua Gao	Joel and Beth Rosenfeld
Rex and Terri Boland	Mike Gausling	Salim and Manal Salet
Stephen and Marcella Breininger	Bill and Mary Ann Heydt	Mike and Diane Salute
Jim and Melissa Brooks	John and Denise Jones	Bill and Susan Schierwagen
Dick & Peg Bus	John and Jenny Kems	Frank and Yvonne Schweighardt
James and Cynthia Bus	Fred and Christine Kimock	Tom and Pat Seidenberger
Greg Butz	William and Patti Lehr	Vincent and Michelle Sorgi
Lee and Dolly Butz	Bob and Sandy Lovett	Charles Versaggi
Michael Butz	Thomas and Cathy Lynch	George and Karen White
Dave and Pam DeCampi	Ted and Suzanne Lyons	Andy Woytek
Bob and Jackie Dixon	Maureen Michael and Mark Gottwald	Bob & Marilyn Zamboldi
Alfred and Jill Douglass	Edwin and Anne Miller	Carl and Debra Zvanut
Ted and Amy Singer Douglass	Jim and Jayne Miller	
Nancy Eckert	Joan Moran	

Members FY19 July 1, 2018- June 30, 2019

# Lifetime Giving Society

LIFETIME GIVING SOCIETIES RECOGNIZE DONORS WHO HAVE MADE SIGNIFICANT CUMULATIVE FINANCIAL COMMITMENTS SINCE 2002.

<b>The Founder's Society: \$1,000,000+</b>	Lehigh Valley Health Network	Julius and Kathryn Hommer Foundation	James Fuller*
Air Products	Lucent Technologies Foundation	Keystone Savings Foundation	Holt Family Foundation
W. Beall and Linny* Fowler	PA Department of Education	Lehigh Valley Community Foundation	John Paul and Denise Jones
Bob & Sandy Lovett	Pennsylvania Historical Museum Commission	James and Irene McLean	Just Born Quality Confections
PA Department of Education/Allentown	Frank and Yvonne Schweighardt	Rodale Inc.	Arthur and Denise Katsaros
School District	St. Luke's University Health Network	The Ryan Family Foundation	Lafayette College
PA Redevelopment Assistance Capital	Wyoming Community Foundation	Joseph and Rita Scheller	Laros Foundation
Program		Teva Pharmaceuticals	Lehigh University
PPL	<b>The 1995 Society: \$100,000+</b>	UGI Utilities, Inc.	LSI
The Harry C. Trexler Trust	Agere Systems	US Department of Commerce/Economic	Lutron
	Arcadia Foundation	Development Administration	Ted and Suzanne Lyons
<b>The Legacy Society: \$500,000+</b>	B. Braun Medical	US Department of Education / Carbon Lehigh	Mack Trucks
Dexter F. and Dorothy H. Baker Foundation	BB&T	Intermediate Unit	Rich and Georgine Milker
Century Fund	Bosch Rexroth Corporation	Wachovia Bank	Jim and Peggy Nallo
The Donley Foundation	Capital Blue Cross		National Science Foundation / Lehigh
Vince and Michelle Sorgi	City of Easton	<b>The Laureate Society: \$50,000+</b>	University
	Coca-Cola Bottling Company of the Lehigh	Amaranth Foundation	Norris McLaughlin and Marcus
<b>The Discovery Society: \$250,000+</b>	Valley	Thermo Fisher Scientific	RCN
Alvin H. Butz, Inc.	Donald B. and Dorothy L. Stabler Foundation	Steve and Marcella Breininger	Rider Pool Foundation
ATAS International, Inc.	Edward Donley*	Greg Butz	Schyler Kems Foundation
County of Lehigh	Follett, LLC.	City Center Lehigh Valley	Troan Family Foundation
County of Northampton	William and Phyllis Grube	Daiichi Sankyo, Inc.	Harold* and Marcia Wagner
Institute of Museum and Library Services	Highmark Blue Shield	Embassy Bank	

\*Deceased



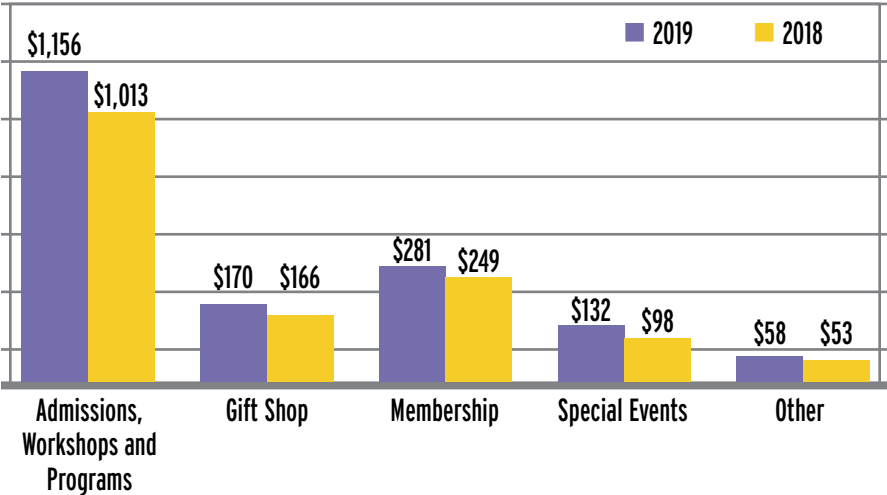
# Financials

Statements of Activities			
Years Ended June 30		Fiscal Year 2019	Fiscal Year 2018
REVENUES	Admissions, workshops and programs	1,155,614	1,012,574
	Gift shop	170,329	165,806
	Membership	281,323	249,426
	Special events (net of expenses)	132,285	97,635
	Other	57,500	53,016
	<b>Total Revenues</b>	<b>1,797,051</b>	<b>1,578,457</b>
SUPPORT CONTRIBUTIONS	Support Contributions	838,926	1,189,122
	Grants, government	727,890	431,831
	Grants, private	349,462	262,500
	Donated materials and supplies	101,928	101,261
	<b>Total Support</b>	<b>2,018,206</b>	<b>1,984,714</b>
	<b>Total Revenues &amp; Support</b>	<b>3,815,257</b>	<b>3,563,171</b>
EXPENSES	Program services	2,509,689	2,151,119
	Supporting services:		
	Management and general	472,673	439,193
	Expansion activities	99,626	872,024
	Fundraising	235,641	190,857
	<b>Total Expenses</b>	<b>3,917,629</b>	<b>3,653,193</b>
	<b>Change in Net Assets</b>	<b>(102,372)</b>	<b>(90,022)</b>
<b>Net Assets, beginning (as restated)</b>		<b>6,580,062</b>	<b>6,670,084</b>
<b>Net Assets, ending</b>		<b>6,477,690</b>	<b>6,580,062</b>

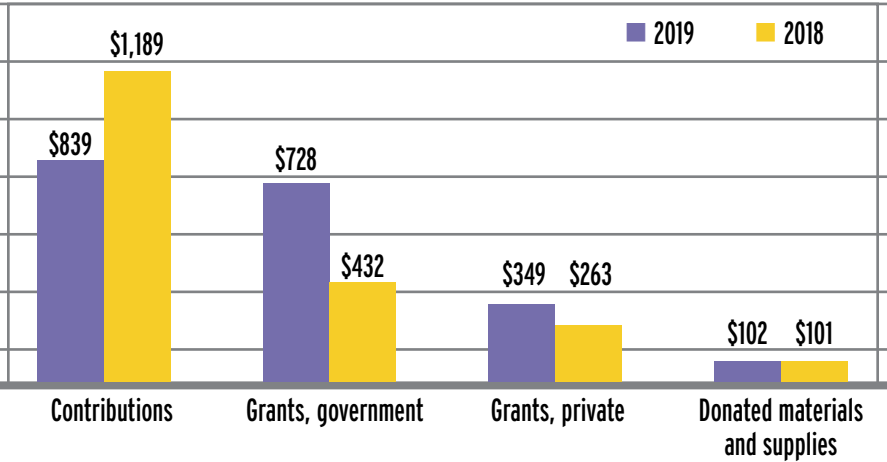
Note: FY2019 and FY2018 include expenses for expansion activities funded by contributions raised in FY2017

Statements of Financial Position			
Years Ended June 30	Fiscal Year 2019	Fiscal Year 2018	
ASSETS	Current Assets:		
	Cash, cash equivalents	709,762	530,954
	Accounts receivable	56,446	57,442
	Grants receivable	141,048	228,246
	Unconditional promises to give	398,593	273,334
	Inventory	20,652	13,240
	Prepaid expenses	49,346	60,249
	Other	5,646	—
	<b>Total Current Assets</b>	<b>1,381,493</b>	<b>1,163,465</b>
	Noncurrent Assets:		
Property and Equipment, net	5,799,821	6,140,630	
Unconditional Promises to give	303,737	374,017	
<b>Total Noncurrent Assets</b>	<b>6,103,558</b>	<b>6,514,647</b>	
<b>Total Assets</b>	<b>7,485,051</b>	<b>7,678,112</b>	
LIABILITIES	Current Liabilities:		
	Current portion of long-term debt	68,510	65,194
	Accounts payable and other liabilities	42,439	53,826
	Accrued expenses	161,841	94,421
	Deferred revenue	295,633	309,952
	<b>Total Current Liabilities</b>	<b>568,423</b>	<b>523,393</b>
Long-term debt, less current maturities and unamortized costs	438,938	539,525	
<b>Total Liabilities</b>	<b>1,007,361</b>	<b>1,062,918</b>	
NET ASSETS	Unrestricted	5,467,278	5,790,370
	Temporarily restricted	1,010,412	789,692
	<b>Total Net Assets</b>	<b>6,477,690</b>	<b>6,580,062</b>
	<b>Total Liabilities and Net Assets</b>	<b>7,485,051</b>	<b>7,642,980</b>

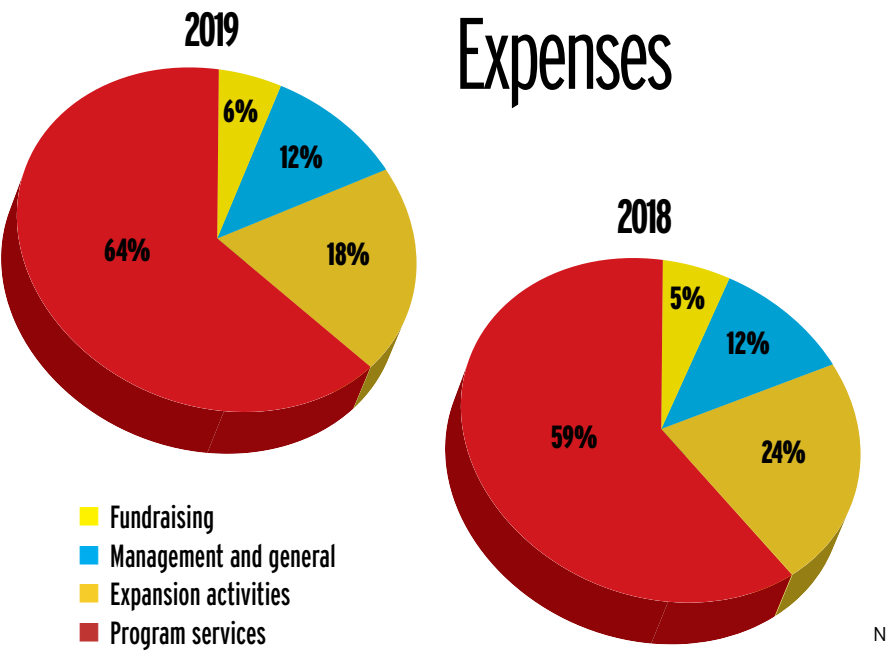
## Earned Revenue by Source



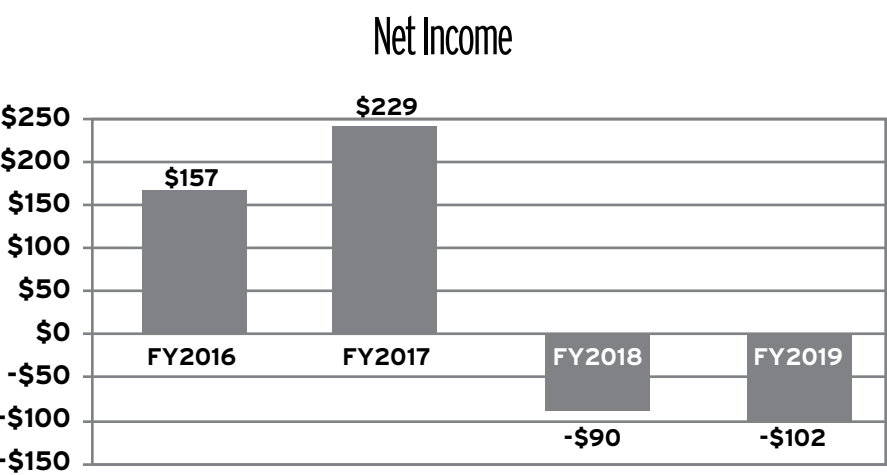
## Support by Source



## Expenses



## Financial Trend



Note: FY2018 & FY 2019 include expenses for expansion activities funded by contributions raised in FY2017





**CHAIRMAN:** Vincent Sorgi, President and Chief Operating Officer, PPL Corporation  
**VICE CHAIRMAN:** James E. McLean, WMS, Senior Vice President, Investments, Steel Valley Investment Group  
**TREASURER:** Stephen K. Breininger, Vice President and Controller, Finance & Regulatory Affairs, PPL Corporation  
**SECRETARY:** Hon. Jane R. Ervin, CEO/President, Retired, Community Services for Children, Inc.  
**CHIEF EXECUTIVE OFFICER:** Lin Erickson, Executive Director and CEO, Da Vinci Science Center

### TRUSTEES

Gregory S. Altonen, Vice President, Engineering Operations, Lutron Electronics Company  
Mindy Beck, Director of Client Management-Eastern Region, Highmark Blue Shield  
Ann D. Bieber, Ed.D., President, Lehigh Carbon Community College  
Rex Boland, Vice President and General Manager, Allentown Operations, B. Braun, Inc.  
Dick Bus, President, ATAS International, Inc.  
W. Beall Fowler, Ph.D., Professor Emeritus of Physics, Lehigh University  
Jack Gross, Esq., Partner, Gross McGinley Attorneys at Law  
Rachel Hayden, Vice President and Chief Information Officer, Just Born, Inc.  
Debra H. Lamb, Vice President of Development, Lehigh Valley Children's Centers  
J. Robert Lovett, Ph.D., Executive Vice President, Retired, Air Products and Chemicals, Inc.  
Catherine Lynch, Community Volunteer/Formal Non Profit CEO

Megan McGovern, Business Team Leader, Mack Trucks  
Elizabeth M. Meade, Ph.D., President, Cedar Crest College  
Thomas Parker, Superintendent of Schools, Allentown School District  
Edith Ritter, Executive Director, Retired, Manufacturers Resource Center  
Joel C. Rosenfeld, M.D., M.Ed., FACS Chief Academic Officer, St. Luke's University Health Network, and Senior Associate Dean, Temple/St. Luke's School of Medicine  
Michael P. Salute, Director of Workforce Development, Reading Area Community College  
Susan Schierwagen, VP of Couplings, Fittings and Fire Suppression, Victaulic  
Michael J. Stoudt, Jr., CPA, Managing Member, Stoudt Associates, LLC  
George P. White, Ed.D., Managing Director for Student Access and Success, Retired, Lehigh University

### LEADERSHIP TEAM

Lin Erickson, Executive Director & CEO  
Maureen Michael, Chief Administrative Officer & CFO  
Judy Belaires, CFRE, Director of Philanthropy  
Karen Knecht, Director of Education  
Brian Strohecker, Director of Museum Operations  
Tyler Groft, Sr. Manager of Museum Operations





## YOU CAN HELP

PLEASE DONATE NOW

### CALL

Judy Belaires, Director of Philanthropy  
484-664-1002 extension 102

### MAIL

Attention: Philanthropy Department  
Da Vinci Science Center  
3145 Hamilton Boulevard Bypass  
Allentown, PA 18103

### ONLINE

[www.davincisciencecenter.org/support/make-a-donation/](http://www.davincisciencecenter.org/support/make-a-donation/)



## YOU CAN:

- Help students become the problem solvers of tomorrow.
- Help the Da Vinci Science Center continue to bring science to life.

In the wake of a global pandemic, the Da Vinci Science Center's role is more important than ever. A strong STEM workforce and a scientifically literate society are humanity's best hopes for addressing the coronavirus pandemic and other major global challenges.

## HELP US BRING SCIENCE TO LIFE AND LIVES TO SCIENCE.

- With your support, we can provide science learning experiences for underserved youth in their homes, at the science center, and at school and community sites. This request is particularly important to ensure that low income youth, many of whom have been isolated in their homes for weeks, get access to STEAM educational experiences more readily available to their peers.
- Help us share programs like Outbreak Alert!, a class designed to inspire the scientists of the future by introducing students to the basics of how diseases spread, how to engineer an antiviral, and how to prevent an outbreak from becoming a pandemic.

## PLEASE DONATE NOW.

All donations are fully tax deductible. With the passage of the CARES Act, individuals are permitted to deduct up to \$300 of cash contributions (couples up to \$600), regardless of whether they are eligible to take itemized deductions.





DA VINCI  
**SCIENCE**  
CENTER®



**Da Vinci Science Center**

3145 Hamilton Blvd Bypass

Allentown, PA 18103

484-664-1002

[davincisciencecenter.org](http://davincisciencecenter.org)