

# WHERE INSPIRATION MEETS **CELEBRATION**



DA VINCI  
**SCIENCE**  
CENTER®  
AT PPL PAVILION

## EVENT RENTALS



# INSPIRE GATHERING

Why settle for ordinary when you can host private events in a space designed to ignite imagination!

With 30,000 square feet of dynamic event space, Da Vinci Science Center at PPL Pavilion offers endless possibilities for unforgettable experiences.





## BRAND NEW & STATE-OF THE ART

Our modern venue features cutting-edge technology, flexible layouts, and stunning architecture — perfect for memorable events. All rentals include onsite Audio Visual.



## VERSATILE EVENT SPACES

From elegant indoor halls to an outdoor terrace with a view, our spaces adapt to your vision.



## STEM-INSPIRED ADD-ONS

Wow your guests with science demonstrations, animal encounters, or exclusive behind-the-scenes tours.



## ONE-OF-A-KIND ATMOSPHERE

Host your event surrounded by hands-on exhibits, immersive science experiences, and a setting that sparks wonder.



## PRIME LEHIGH VALLEY LOCATION

Centrally located in the Downtown Allentown Cultural Arts and Entertainment District



## CUSTOMIZABLE PACKAGES

Choose from a range of options to suit your style, budget, and guest count — including private access and curated enhancements.



## LEO'S CULINARY CREATIONS

Enjoy premium in-house catering from our exclusive food partner, offering customizable menus for every occasion.



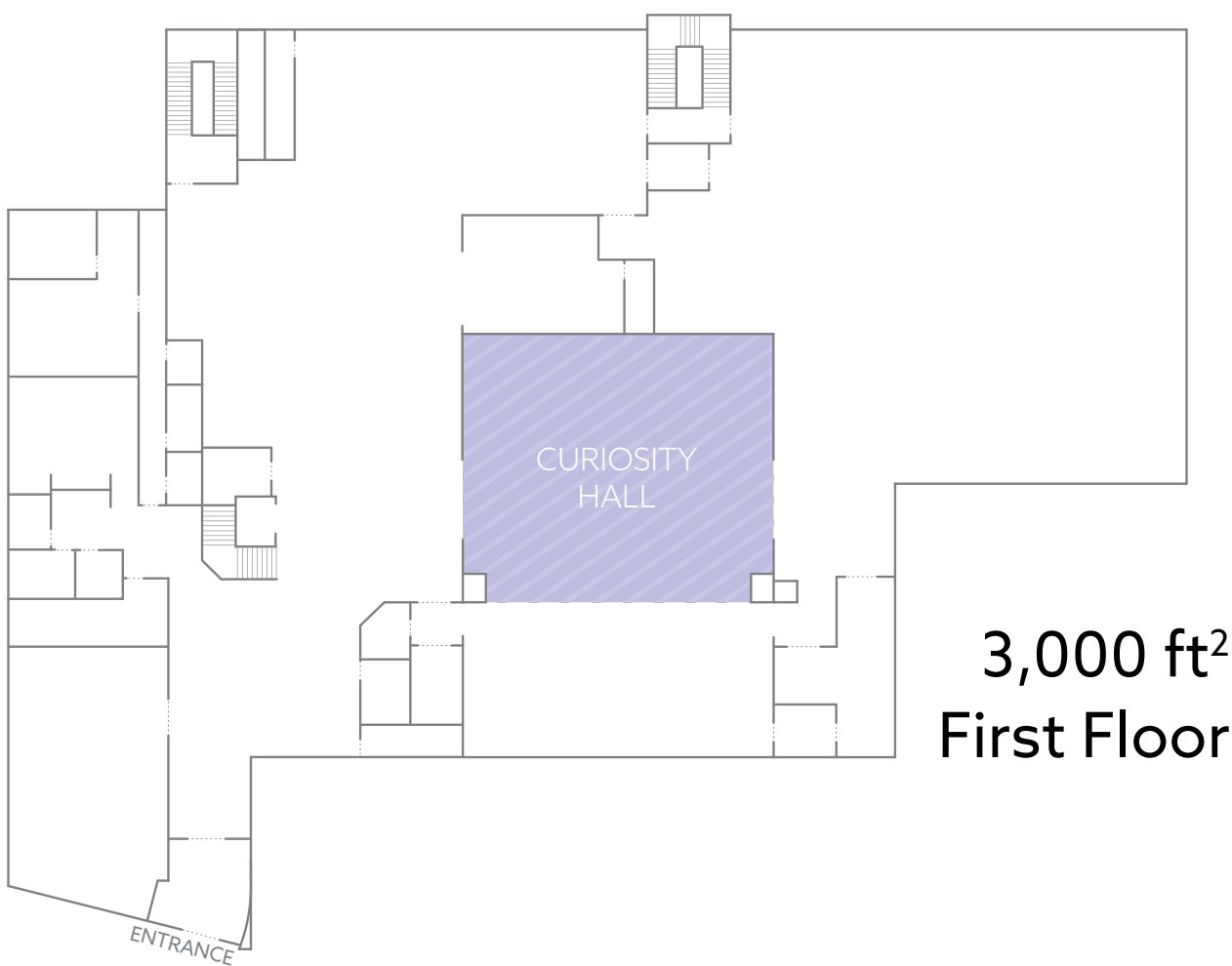
# CURIOSITY HALL

*FIRST FLOOR*

Curiosity Hall is a 3,000-square-foot space with ceilings over 50 feet high, making it one of the most impressive venues in the Lehigh Valley. It features a giant 56' x 50' projection wall powered by six Christie projectors, creating stunning, high-resolution visuals.

With its grand scale and immersive technology, Curiosity Hall is perfect for unforgettable events, receptions, and gatherings of up to 420 guests.





### Audio-Visual Systems

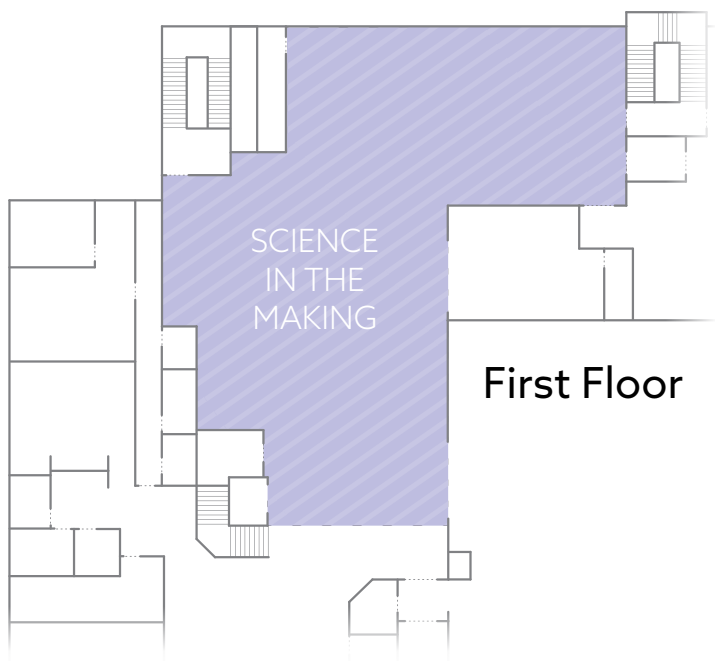
- **Projection:** Six (6) rear-mounted front projection Christie projectors with plug and play capability
- **Screen:** 50' x 56'
- **Microphone:** Up to four (4) wireless Shure Microphones, Handheld or Headset



# SCIENCE IN THE MAKING

## FIRST FLOOR

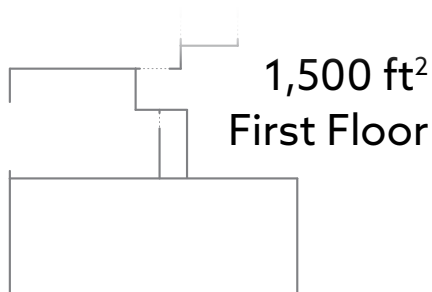
Step into Science in the Making, a dynamic gallery showcasing the cutting-edge innovations of Lehigh Valley industries. This exhibit celebrates local ingenuity while bringing scientific and engineering concepts to life in engaging, hands-on ways.



# SCIENCE THEATER

FIRST FLOOR

Located next to the grandeur of Curiosity Hall, the Science Theater is a flexible and inviting space perfect for smaller events. It features a 25-foot screen with a projector and seats up to 130 guests, making it ideal for rehearsal dinners, workshops, executive retreats, or team training.



## Audio-Visual Systems

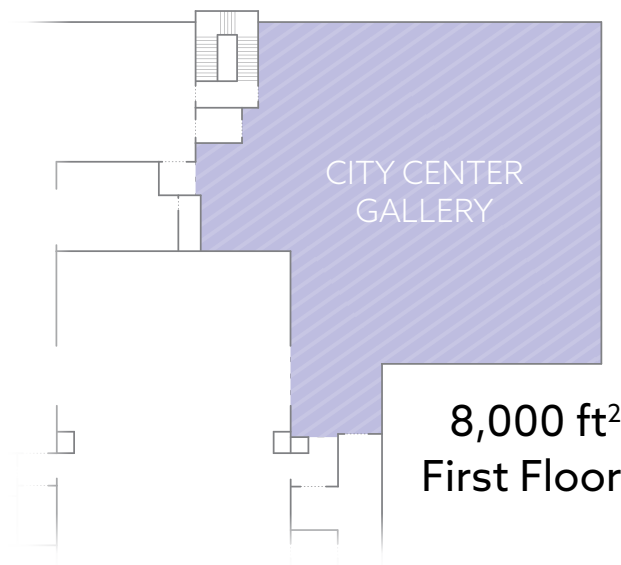
- **Projection:** One (1) ceiling-mounted front projection Epson projector with plug and play capability
- **Displays:** Two (2) high definition ceiling-mounted displays
- **Screen:** 25' x 20'
- **Microphone:** Up to four (4) wireless Shure Microphones, Handheld or Headset



# CITY CENTER GALLERY

FIRST FLOOR

A stunning 8,000 sq ft exhibition space that brings world-class traveling exhibits to downtown Allentown—hosted in partnership with City Center. Ideal for private receptions, VIP events, and corporate functions set amid headline-worthy displays.







Hold your event among one of the blockbuster national exhibits from our ever-changing lineup of traveling exhibitions that take residence within City Center Gallery. Newsworthy exhibitions provide unique ambiance and photo-worthy backdrops for your events.

**Body Worlds 101:  
A Journey Under the Skin**  
Feb 13, 2026 - May 25, 2026

**Impressionists:  
Immersive Exhibition**  
Jun 8, 2026 - Sep 7, 2026

**Finding Titanic:  
The Secret Mission**  
Sep 28, 2026 - Jan 19, 2027

**Artemis Adventure with  
LEGO® Bricks**  
May 21, 2027 - Sep 6, 2027

*Exhibition dates subject to change.*





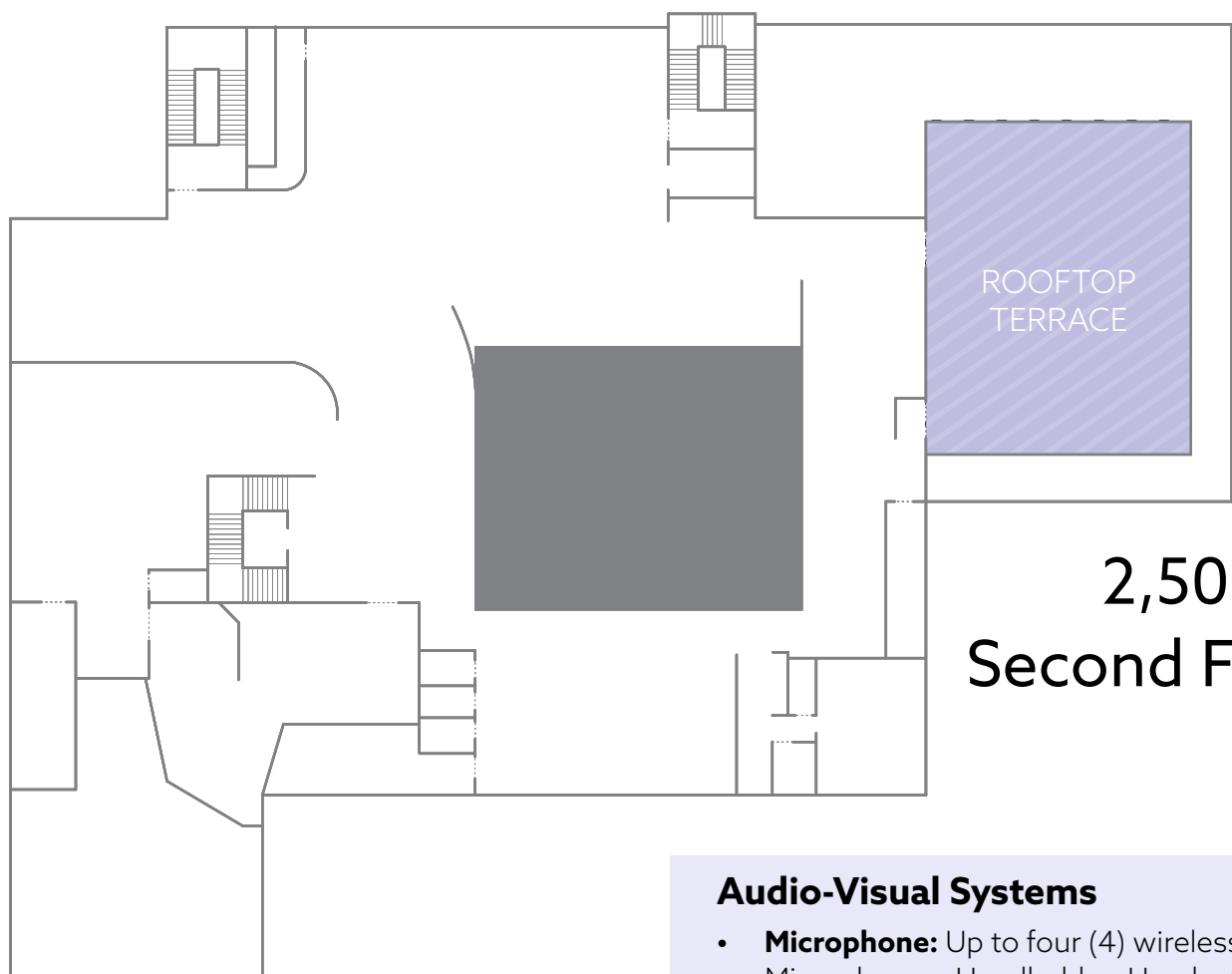
# ROOFTOP TERRACE

*SECOND FLOOR*

Take your event sky-high on our rooftop Rooftop Terrace. With capacity for up to 200 guests, it's perfect for cocktail hours or receptions under the stars, with stunning views of downtown Allentown.







2,500 ft<sup>2</sup>  
Second Floor

### Audio-Visual Systems

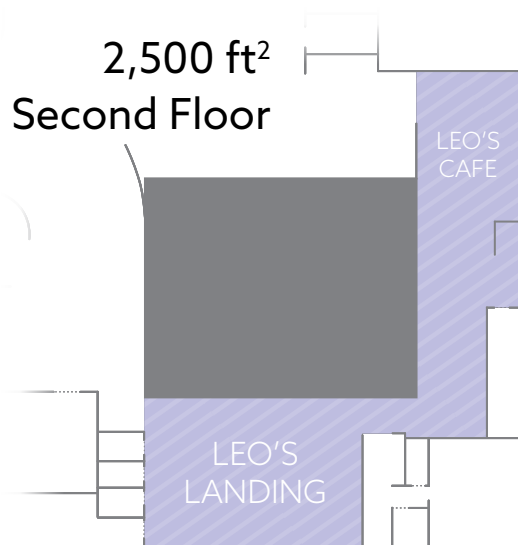
- **Microphone:** Up to four (4) wireless Shure Microphones, Handheld or Headset



# LEO'S CAFE + LEO'S LANDING

SECOND FLOOR

Take a break in Leo's Café, serving fresh sandwiches, salads, and snacks daily. Host your party nearby in Leo's Landing, a cozy semiprivate space designed for celebrations of up to 40 guests—ideal for birthdays, lunches, or casual group gatherings.

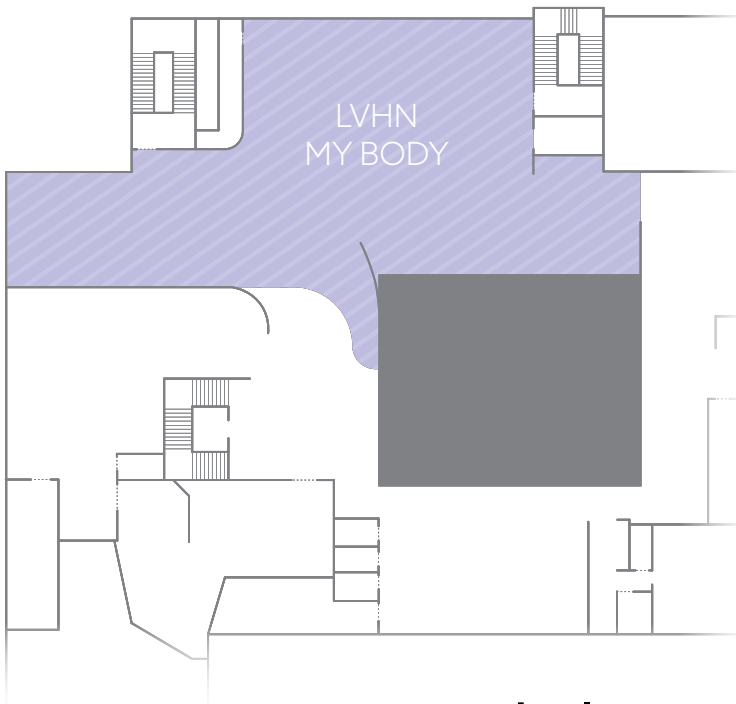




# LVHN MY BODY

SECOND FLOOR

From real medical specimens to large interactive installations, dive into the wonders of the human body like never before with immersive, hands-on experiences for every age.



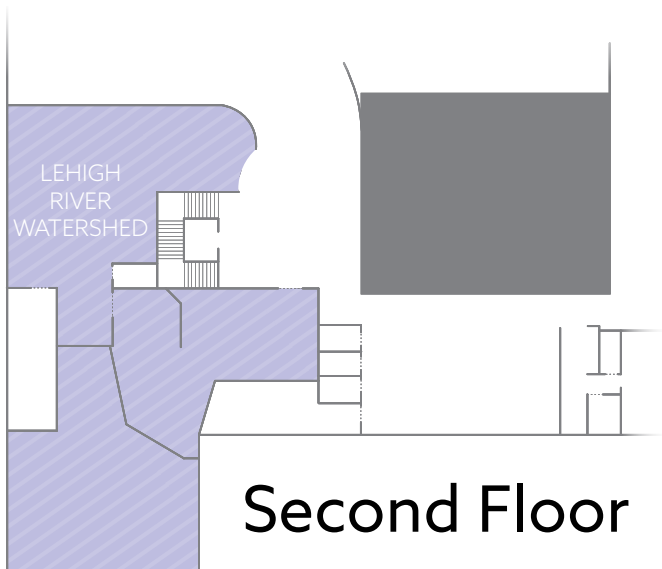
Second Floor



# LEHIGH RIVER WATERSHED

## SECOND FLOOR

Host your event surrounded by the natural beauty of the Lehigh Valley—from a limestone cave to a Pocono ravine, complete with live river otters. This one-of-a-kind setting offers a memorable backdrop that sparks curiosity, conversation, and connection with the local environment.







# LEONARDO'S CULINARY CREATIONS

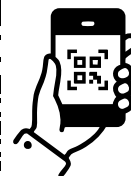
— CATERING & EVENTS —

Leonardo's Culinary Creations delivers culinary innovation that complements the scientific atmosphere of Da Vinci Science Center. From themed party menus and gourmet buffets to elegant receptions, their catering offers taste, creativity, and seamless service for every event.



## Leonardo's Culinary Creations

Jason Blumenfeld, *General Manager*  
blumenfeld-jason@aramark.com  
(412) 926-6826



Scan to  
view our  
current  
menu!

# ADD-ONS

From our live ice cream science show, to Fab Lab design workshops, to up-close animal encounters - Da Vinci Science Center offers unforgettable add-ons that spark curiosity and bring science to life for your guests.





# AUDIO & VIDEO



## Curiosity Hall

- **Projection:** Six (6) rear-mounted front projection Christie projectors with plug and play capability
- **Screen:** 50' x 56'
- **Microphone:** Up to four (4) wireless Shure Microphones, Handheld or Headset

## Rooftop terrace

- **Microphone:** Up to four (4) wireless Shure Microphones, Handheld or Headset

## Museum Audio-Visual Capabilities:

- High-definition projectors and screens
- Built-in sound system with wireless microphones
- Lighting options to enhance presentations or ambiance
- HDMI & wireless connectivity for laptops and media devices
- Dedicated on-site tech support during your event

## Portable Audio-Visual Systems

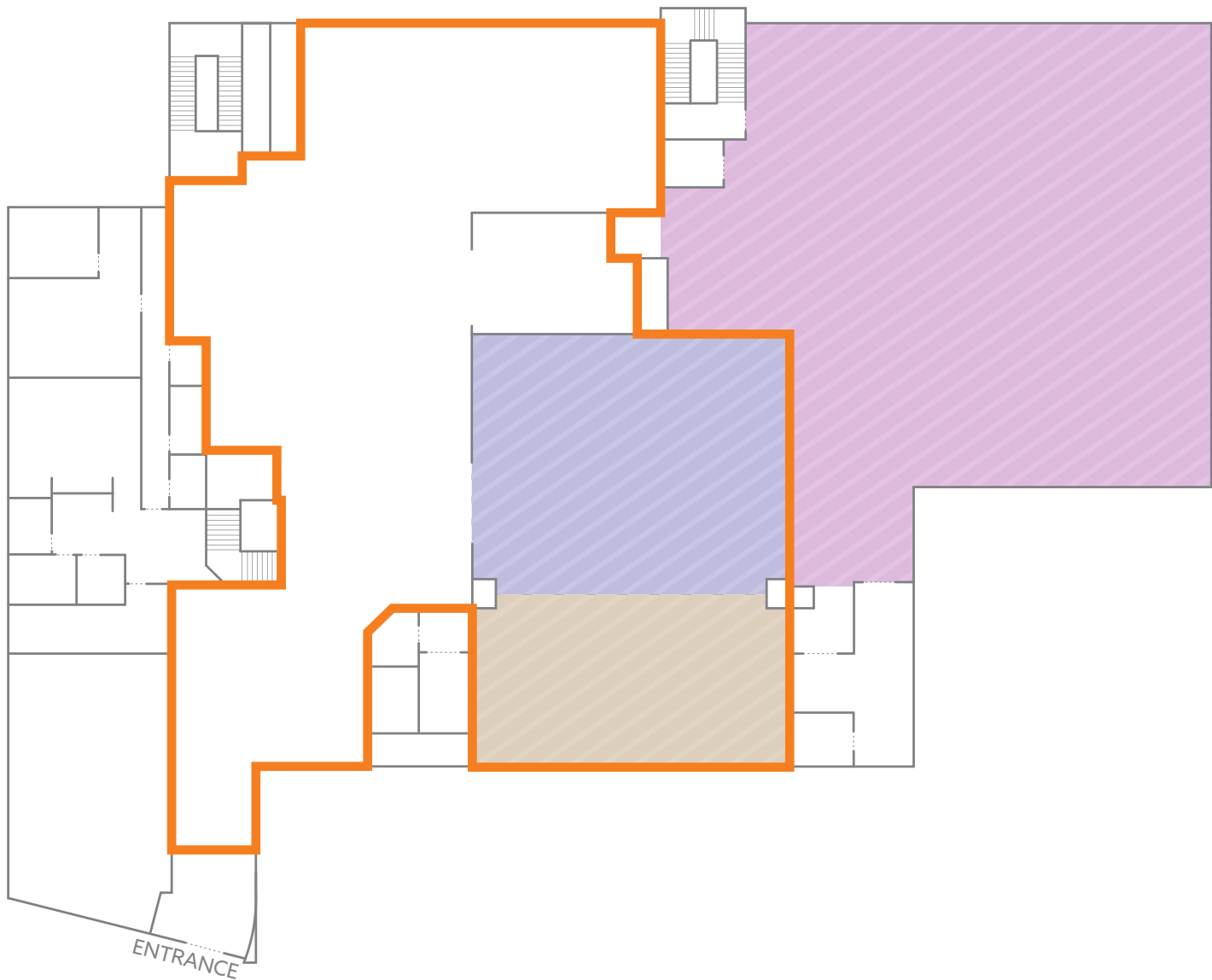
- **Displays:** Four (4) 88" Promethean Boards on wheels, can be placed anywhere in the building
- **Podiums:** Two (2) podiums, can be placed anywhere in the building
- **Microphone:** One (1) wireless handheld microphone with mobile speaker

## Science Theater

- **Projection:** One (1) ceiling-mounted front projection Epson projector with plug and play capability
- **Displays:** Two (2) high definition ceiling-mounted displays
- **Screen:** 25' x 20'
- **Microphone:** Up to four (4) wireless Shure Microphones, Handheld or Headset

# FIRST FLOOR

CAPACITIES & PRICING



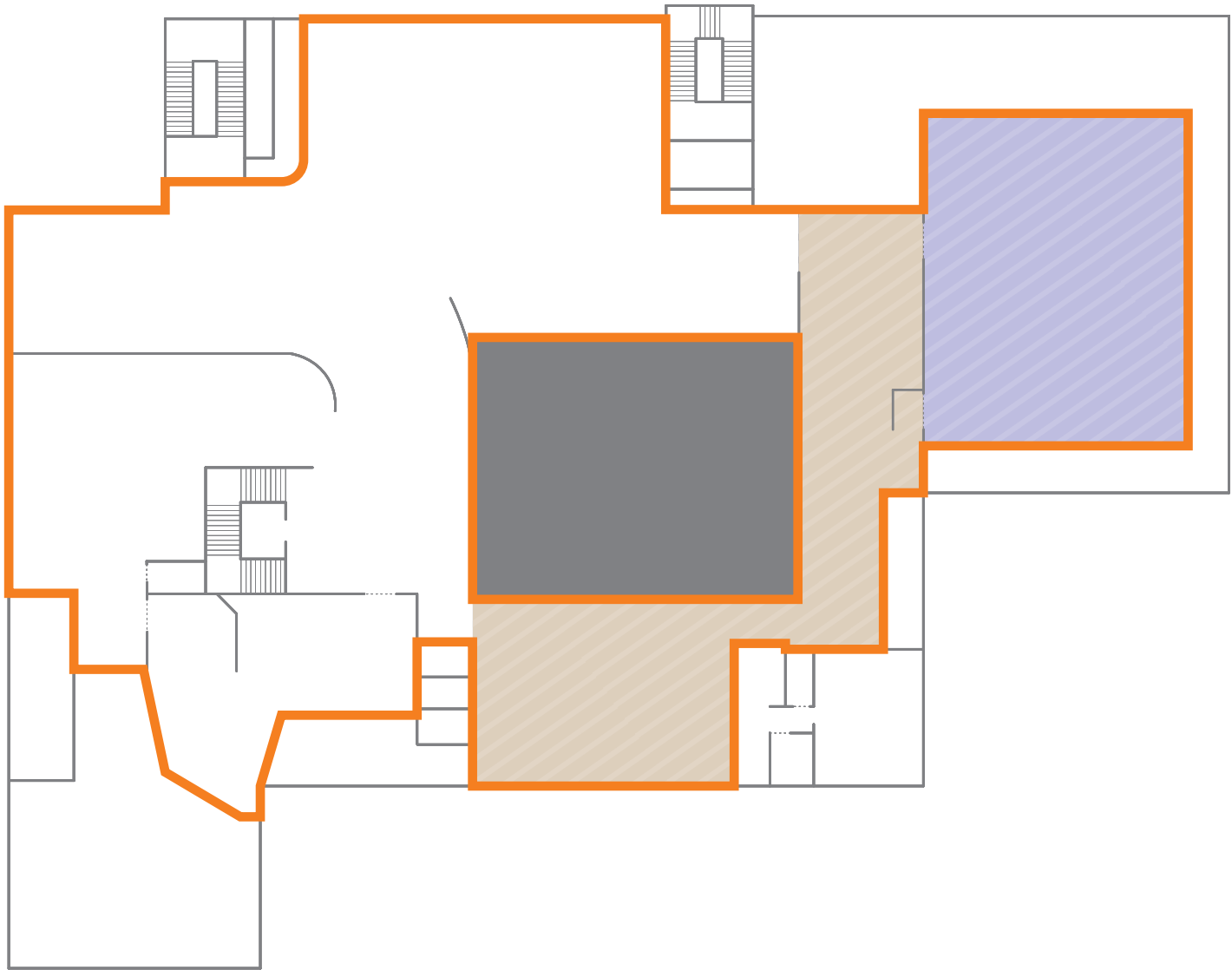
		AREA	CEILING HEIGHT	RECEPTION	ROUNDS OF TEN	ROUNDS OF EIGHT	THEATER STYLE	STANDARD PRICING Per Hour, Outside of Museum Hours
1ST FLOOR	Curiosity Hall	3,000 ft²	60 ft	195	200	190	190	\$600
	Science Theater	1,500 ft²	10 ft	110	110	90	110	\$400
	Curiosity Hall + Science Theater	4,500 ft²		300	300	250	300	\$1,000
	City Center Gallery	8,000 ft²		900	550	450	800	Inquire
	First Floor Less City Center Gallery	10,000 ft²		600	N/A	N/A	N/A	\$1,250
1F+2F	Full Museum Both First & Second Floors	30,000 ft²		1,100	Inquire	Inquire	N/A	\$2,500
GROUND	Classrooms Ground Floor, 2 Available	900 ft²	10 ft	70	50	50	70	\$100

- All rentals 2 hour minimum
- 1 hour set up time and 1 hour breakdown time included at no additional charge
- Rentals held during museum hours will be charged standard hourly fees plus a museum buyout fee based on the date and time selected
- 30% discount for non-profit organizations
- 50% discount for District Connect, Community Connect, and Corporate Connect members



# SECOND FLOOR

CAPACITIES & PRICING



		AREA	CEILING HEIGHT	RECEPTION	ROUNDS OF TEN	ROUNDS OF EIGHT	THEATER STYLE	STANDARD PRICING Per Hour, Outside of Museum Hours
2ND FLOOR	Skyline Terrace	2,500 ft²		190	180		190	\$600
	Leo's Landing	1,000 ft²	10 ft	70	40	40	190	\$100
	Second Floor	10,000 ft²		600	N/A	N/A	N/A	\$1,250
1F+2F	Full Museum Both First & Second Floors	30,000 ft²		1,100	Inquire	Inquire	Inquire	\$2,500

- All rentals 2 hour minimum
- 1 hour set up time and 1 hour breakdown time included at no additional charge
- Rentals held during museum hours will be charged standard hourly fees plus a museum buyout fee based on the date and time selected
- 30% discount for non-profit organizations
- 50% discount for District Connect, Community Connect, and Corporate Connect members



**Erica Jantos**, Event Sales Manager  
events@davincisciencecenter.org 484.619.3993

Da Vinci Science Center is a 501(c)(3) organization. Donations to Da Vinci Science Center help expand access to science education and inspire the next generation of STEM leaders.